

# PRODUCTS

TECHNICAL INFORMATION

## **HW20 SERIES FIXED WINDOW WALL**



# PRODUCT DESCRIPTION

## SYSTEM DESCRIPTION

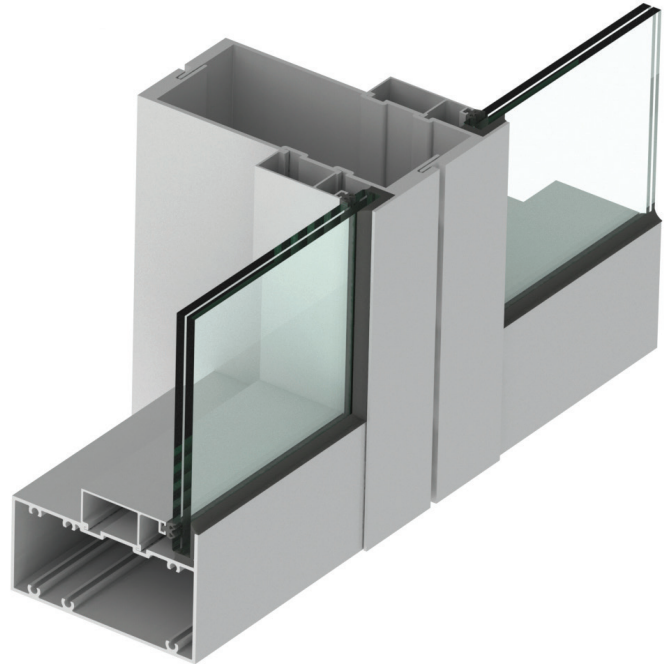
- › Large Missile Impact and Small Missile Impact
- › Frame size (depth): 8 1/8"
- › Maximum height: 16' (LMI) - 14' (SMI)
- › Maximum panel width: 5'-7 3/4" (LMI) - 5' (SMI)

## FEATURES

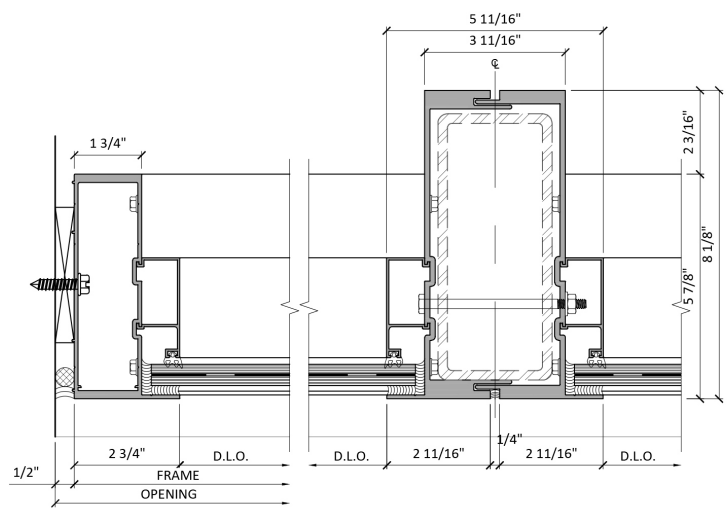
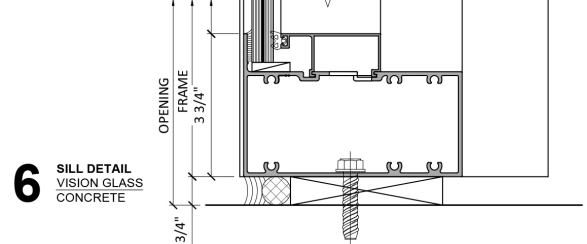
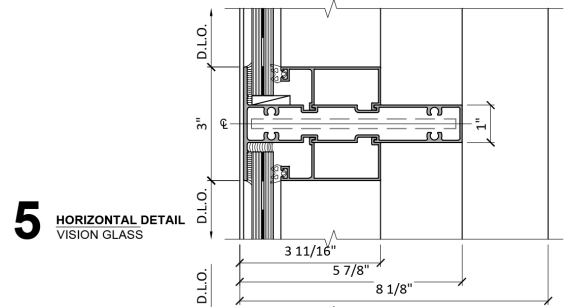
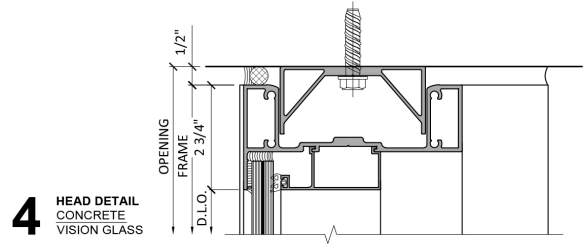
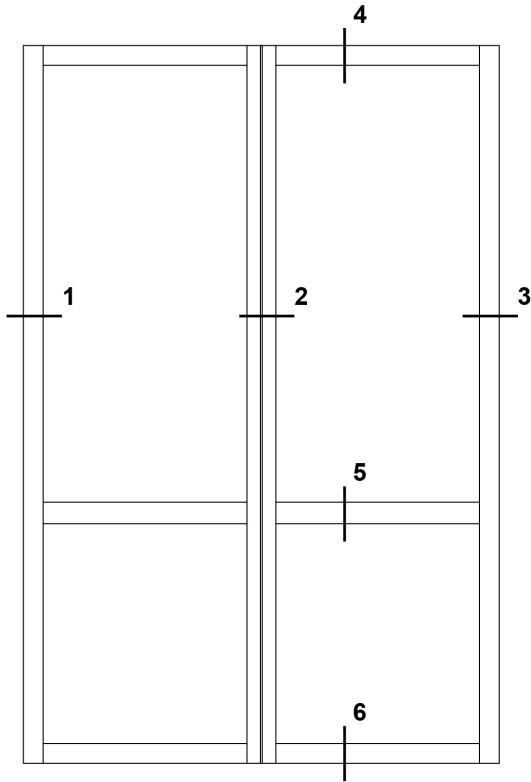
- › Pre-assembled & pre-glazed
- › Laminated (9/16") glass
- › Reinforced options available for LMI

## PERFORMANCE

- › Design loads:
  - + 130/-130 PSF (LMI)
  - + 132/-132 PSF (SMI)(See product approval charts for specific design loads capacities)
- › Air infiltration: 6.24 PSF
- › Water Infiltration: 19.8 PSF

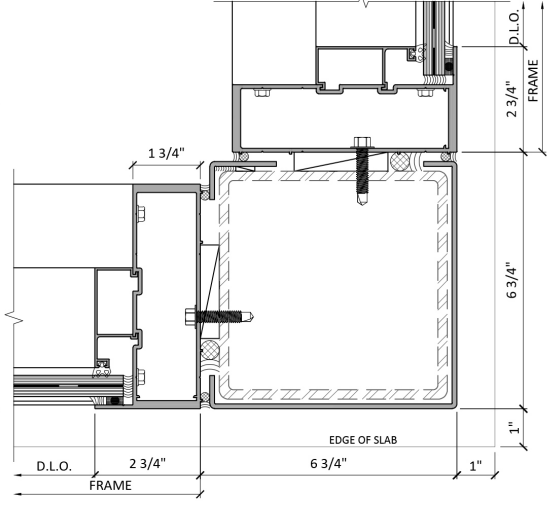


# TYPICAL DETAILS



**1 JAMB DETAIL**  
CONCRETE  
VISION GLASS

**2 SPLIT MULLION**  
VISION GLASS



**3 VISION GLASS**  
VISION GLASS



**EPSYLON USA**

1881 S.W. 3rd Street

Pompano Beach, FL 33069

Tel.: 954-942-3322

[info@epsylon.ca](mailto:info@epsylon.ca)

---