

# PRODUCTS

TECHNICAL INFORMATION

## **HW40 SERIES FIXED WINDOW WALL**



# PRODUCT DESCRIPTION

## SYSTEM DESCRIPTION

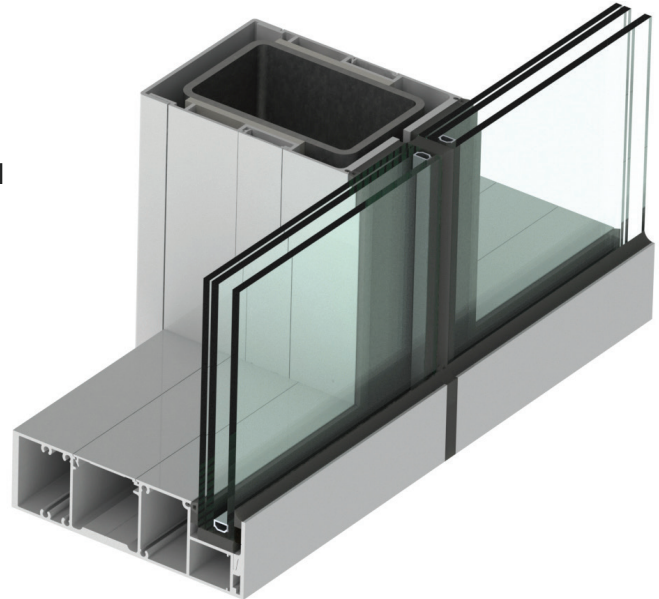
- › Large Missile Impact and Small Missile Impact
- › Frame size (depth): 8 1/8" (excluding rear cladding)
- › Maximum width and height: Refer to product approval

## FEATURES

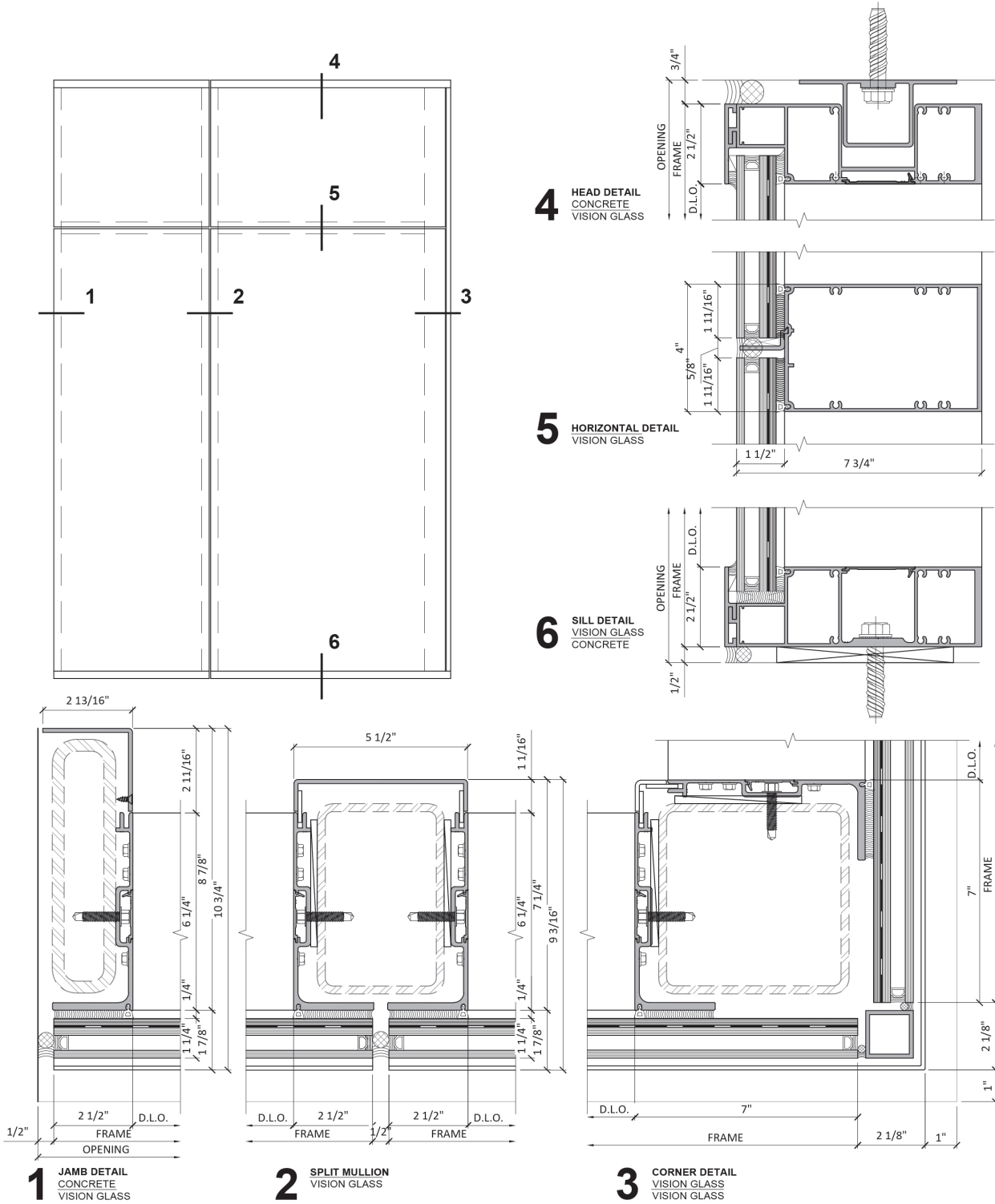
- › Pre-assembled & pre-glazed
- › Laminated/Insulated (1 5/16") and laminated (9/16") glass available

## PERFORMANCE

- › Design loads:
  - + 100/-100 PSF (LMI/SMI)(See product approval charts for specific design loads capacities)
- › Air infiltration: 6.24 PSF
- › Water Infiltration: 9.0 PSF



# TYPICAL DETAILS





**EPSYLON USA**

1881 S.W. 3rd Street

Pompano Beach, FL 33069

Tel.: 954-942-3322

[info@epsylon.ca](mailto:info@epsylon.ca)

---